



Growing
with Purpose,
Together

2024 - 2025
**ANNUAL
REPORT**



Inclusive communities where people of all abilities are valued

Our Value Proposition

Our Vision, Mission and Values resonate throughout the Sunbeam Community, reflecting our commitment to Choice and Inclusion.

Vision

Mission

Values

Our Strategic Plan

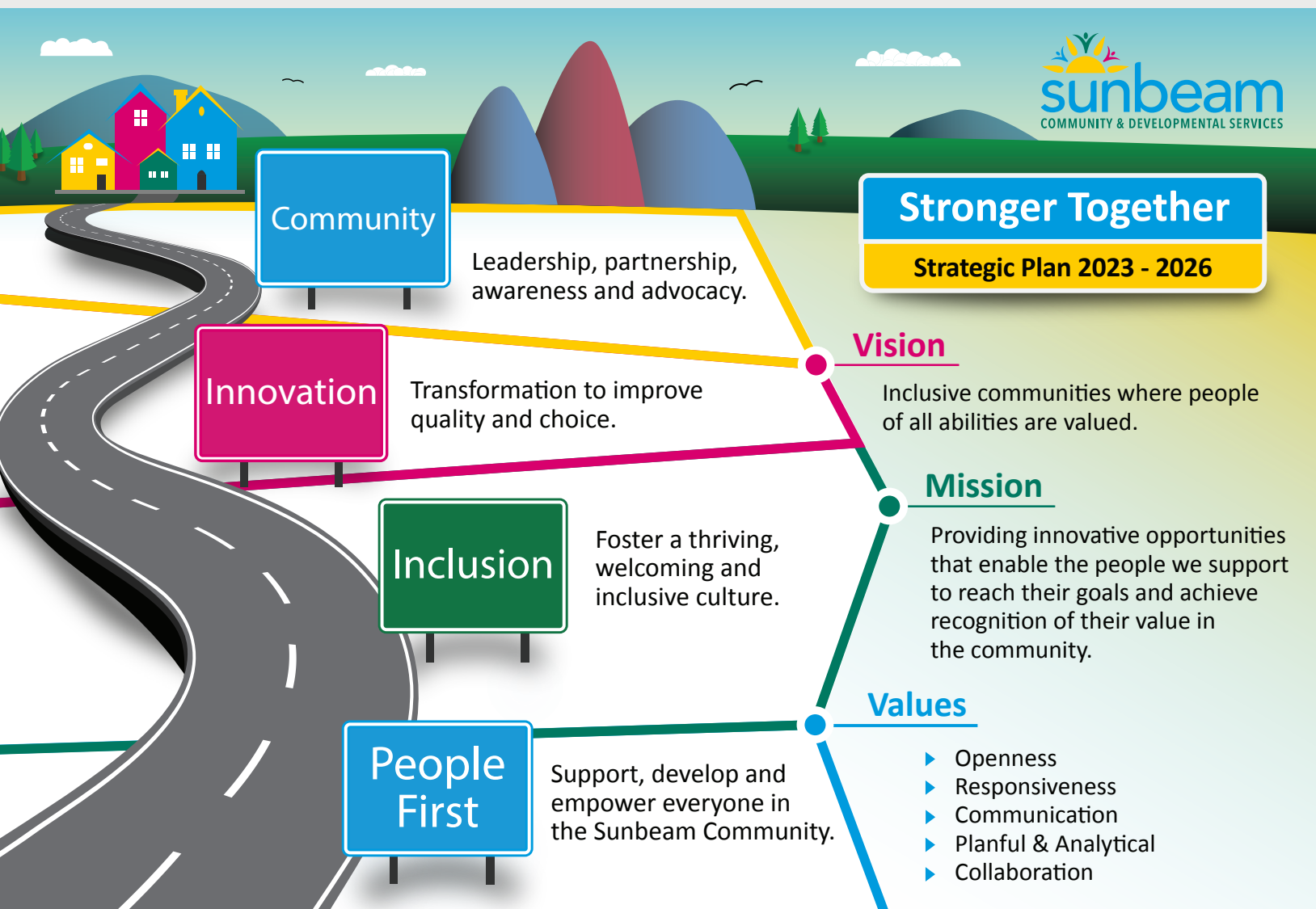


TABLE OF CONTENTS

Inside Cover

2

3-5

6

7

8

9

10

11

12-13

14

15

16-18

19

20-21

22

23

24-25

Back Cover

Vision, Mission, Values and Sunbeam Strategic Plan

Message from Board President and Chief Executive Officer

Program and Service Highlights

Volunteers Make Waves

Governance and Leadership

SDRC: A Year of Growth, Resilience and Impact

Staff Shout Outs / Sunbeam Boosters

Staff Long Service Awards

Enriching Lives and Donor Impact

Seating & Mobility Clinic

Financial Highlights 2024-2025

Developmental Services Ontario: Navigating Support Together

Our Community in Focus - Meet Gurnek, Mary, and Linda!

Comfort, Continuity, and Compassion When it's Needed Most:
Hospital Care Program

Dedicated to Making a Difference: Sunbeam Employee Spotlights

A Storybook Celebration: Kid's Day 2024

Out and About with Sunbeam

5-Year Reflections From Our CEO

Connect With Us / Sunbeam Affiliations

A Message from our Board President and Chief Executive Officer

Sunbeam has experienced significant growth through the expansion of existing services and the launch of new, innovative programming as we respond to the increasing need for services.

In Community Living, we've opened several new inclusive living group homes, with our newest location set to open in late 2025. By creating additional capacity, we're able to offer much-needed housing with supports for vulnerable individuals across Waterloo Region.

Our overnight respite program for children with complex needs is busier than ever, continuing to deliver essential caregiver relief to countless families. Meanwhile, our recreation and wellness program has quickly become a mainstay, offering activities that foster social connection, inclusion, and a strong sense of belonging for all participants.

Sunbeam's Developmental Resource Centre served over 2,100 individuals and families last year while Brightside ABA Services delivered over 3,200 hours of clinical therapy to nearly 200 children and families. Brightside's innovative, hub-based model provides coordinated, in-house services designed to enhance outcomes for children while simplifying the experience for families.

Developmental Services Ontario – Central West Region is busier than ever, managing registries exceeding 10,000 requests, and providing information and resources to over 16,000 individuals and families across Waterloo, Wellington, Dufferin, Halton and Peel.

Trust is the cornerstone of our continued growth, a privilege we carry with deep respect and a profound sense of responsibility as we keep pace with the evolving needs of our clients.

Your continued support allows us to strengthen Sunbeam's focus on innovation, quality, and compassion, while we grow our impact across the communities we serve.

With sincere thanks,

Connie Smith

Brian Swainson



Connie Smith
(She/Her)

Board President



Brian Swainson
(He/Him)

Chief Executive Officer

Serving the Sunbeam Community

Program and Service Highlights

In 2024 - 2025, more than 16,000 children, youth, adults and families received services and supports from Sunbeam Community & Developmental Services.



Total Served
2,117
Individuals and Families

SDRC Programs / Services	Outcomes	
Autism Spectrum Disorder Services	171	Consultations
Behavioural Services	194	Consultations
Children's Psychiatric Clinic	109	Referrals
	216	Hours of Service
Community Passport Program Administration	82	Individuals
Coordinated Service Planning	148	Individuals and Families
Fetal Alcohol Spectrum Disorder Services and Supports	173	Individuals, Families and Community Training
Health Education	30	Consultations
Host Family Home Program	4	Individuals
Information and Support Workshops	282	Attendees
New Referral Intakes	646	Individuals
Occupational Therapy	18	Individuals
Quality and Compliance (QAM) Oversight Audits	128	Compliance Visits
Quality Assurance Measures Oversight	142	Individuals and Placements
Resource Clinics	165	Individuals and Families
Respite Coordination	20	Individuals
Respite Service Registry	149	Referrals
Service Coordination and Adult Protective Support Worker Services	726	Individuals and Families
Service Resolution and Service Solutions Coordination and Services	105	Individuals and Families
Social Work Services	486	Consultations
Speech Language Services	187	Consultations
Transitional Aged Youth Supports and Oversight	100	Individuals
Urgent Response Services	109	Individuals and Families



Total Served
189
Individuals and
Families

Way to GROW
Brightside!!



Brightside Programs / Services

Outcomes

ABA Service Packages	220	Service Packages Completed
Brightside ABA Services	3,233	Hours of Service
Occupational Therapy	162	Hours of Service
Speech Language Services	33	Individuals
	165	Hours of Service
Urgent Response Services	29	Referrals



Total Served
150
Individuals and
Families

Community Living Programs / Services

Outcomes

Community Outreach Program	4,168	Attendances
Children's Overnight Respite Program	1,142	Days of Service
Hospital Care Program, supported by donor funds	1,812	Donor-Supported Hours
Inclusive Living Group Homes	35,102	Days of Service
Inclusive Living Group Homes and Overnight Respite Programs	118	Children and Adults
Recreation and Wellness Program	179	Activities & Events
Seating and Mobility Clinic	378	Appointments
Specialized Dental Clinic	612	Appointments

DSO Programs / Services

Outcomes

Adult Urgent Response	210	Service Responses
Assessment of Support Needs	943	Individuals
Connecting Individuals to Available Services	831	Service Responses
Eligibility Confirmations	946	Individuals
Housing Navigation	1,257	Individuals and Families
Information Provision	10,782	Information Responses
Intake Services	1,103	Individuals
Outreach Services	894	Individuals and Families
Triaging	5,324	Service Responses



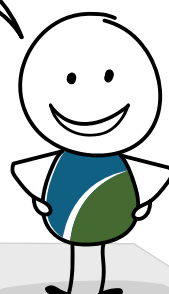
Total Served
16,178
Individuals and Families

Well, that's a fact



1,257 Individuals and Families served by DSO Housing Navigation.

Sunbeam is the host agency for the DSO-CWR.



Sunbeam Community & Developmental Services provides services and supports across Waterloo Region, Wellington County, Dufferin County, Halton Region, and Peel Region.

Volunteers Make Waves

The Heartbeat of our Community

During National Volunteer Week 2024 across Canada, Sunbeam proudly expressed its heartfelt gratitude to all of its volunteers—including the dedicated members of its volunteer-based Board of Directors—whose contributions make a meaningful difference in our community every day. This year, we are proud to spotlight two exceptional volunteers:



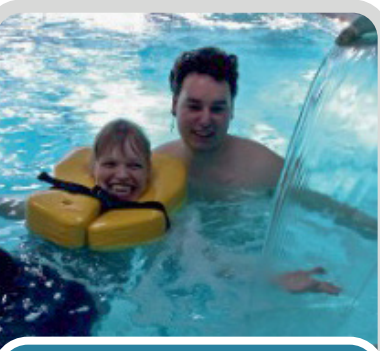
Meet Ethan!!

Ethan volunteers at Sunbeam's Seating Clinic and is a Kinesiology student with aspirations in Occupational Therapy. Initially drawn to Sunbeam's inclusive approach, he soon found inspiration in the talented staff he affectionately calls "wizards," a nod to their skill in making subtle adjustments that greatly improve comfort for the people served at Sunbeam.

Outside of Sunbeam, Ethan is a lifelong sports enthusiast, coach, and video editing hobbyist.

"Being able to support this amazing staff and organization is equipping me with the tools I will need for my own future goals and aspirations," Ethan shares.

Ethan's experience at Sunbeam has deepened his understanding of the diverse needs within the community and reaffirmed his passion for giving back.



Meet Connor!!

Connor, a third-year Psychology student, first connected with Sunbeam through his school community service and rejoined in 2025 as a Pool Aide Volunteer. What began as an interest in helping individuals with developmental disabilities grew into a meaningful journey of learning and advocacy.

Connor now envisions a future working in law, therapy, and community support, aiming to create lasting change. Beyond volunteering, he is a published poet, as well as a passionate fan of dance, drama, and Dungeons & Dragons.

From hands-on program support to governance and advocacy, our volunteers' dedication strengthens our mission and drives person-centred care forward.

Thank you to all our volunteers. Your kindness and commitment are truly invaluable to Sunbeam and the community!

Become a Volunteer

Volunteers make such a positive difference in the lives of the people in the Sunbeam Community. Our Volunteer Program offers more exciting opportunities than ever!

To learn more about becoming a volunteer at Sunbeam, please visit us at <https://sunbeamcommunity.ca/volunteer/>.

Thank you
to all our
volunteers!!



Governance and Leadership

Sunbeam Community & Developmental Services is governed by a volunteer Board of Directors.

Sunbeam's Board of Directors is composed of a diverse group of skilled, compassionate, and experienced community leaders. We gratefully acknowledge their commitment of time and expertise to govern our organization and guide our path forward.

The Chief Executive Officer and Management Team are responsible for the day-to-day operations of the organization and report regularly to the Board of Directors.

Board of Directors

Connie Smith, President
Laura Holtom, Secretary
Stacey Jane, Vice President
Susan Russell, Treasurer

Darcy Balak
Chandelle Cormier
Amanda Craig
John Goerzen

Chantal Hunter
Andrew Kelly
Krista Trow
Ann Marie Yantz

Executive Leadership Team

Brian Swainson, Chief Executive Officer
Laura Theis, Chief Operating Officer
Tim Wilson, Chief Administration Officer
Katharine O'Brien, Executive Assistant

Administration and Support Services

Sana Ali, Director, Financial Services
Natalie Perna, Director, People and Culture
Phill Karasinski, Manager
Ben Brown, Supervisor



Lourdes Toro, Director
Amanda Ficca, Manager
Heather Leisegang, Manager
Erika Gardiner, Nurse Manager
Shereta Bowers, Supervisor
Stallin Brown, Supervisor
Meghan Buck, Supervisor
Christina Christian, Supervisor
Jessica Costa, Supervisor
Jaclyn Gauvreau, Supervisor
Gary Gfroerer, Supervisor
Michelle Hunter, Supervisor
Charlene Jackson, Supervisor
Dhwani Purohit, Supervisor
Amy Richardson, Supervisor
Adrian Schadenberg, Supervisor
Nicole Tailby, Supervisor



Nancy Plater, Director
Michael Dionisi, Supervisor
Diane Lillico, Supervisor
Tiffanie Todd, Supervisor
Amrita Wong, Interim Supervisor

To view our current Board and Leadership please visit: <https://sunbeamcommunity.ca/governance-and-leadership/>

To view a history of Sunbeam's Board Presidents please visit: <https://sunbeamcommunity.ca/board-presidents/>



Tracy Erb, Director
Neil Butler, Manager
Erin Davis, Manager
Deborah Gellatly, Manager
Jackie Lenover, Manager
Jen Shows, Manager
Christine Blocki, Supervisor
Tracey-Ann Corrigan, Supervisor
Kim Kippenhuck, Supervisor
Ashley Schadenberg, Supervisor

"True leadership is about empowering others to shine!"



A Year of Growth, Resilience, and Impact

Sunbeam's Developmental Resource Centre & Brightside ABA Services

This past year has been one of remarkable growth and innovation. The needs of individuals and families in the community are complex, the demand for services and support continues to grow, and our dedicated teams have risen to every challenge with compassion, innovation, and unwavering commitment.

Sunbeam's Developmental Resource Centre provides a breadth of programs serving over 2,000 children, youth, adults and families across Waterloo Region, Wellington County, Dufferin County, Halton Region and Peel Region.

SDRC works collaboratively with many community and system partners within Developmental Services Agencies, Children's Aid Societies, Schools and providers in Community & Social Services, Hospitals & Healthcare, Mental Health & Addictions, Housing & Shelters and so much more. These cross-sector



partnerships allow us to provide the right supports and services, when where and how they are needed to achieve positive outcomes for the people and families we serve.

To learn more about our services, please visit: www.sdrc.ca

This was also a year of new opportunities as the expansion of **Sunbeam's Brightside Applied Behaviour Analysis (ABA) Services** was launched at its new Family Centre location in 2024.

This strategic move has created a central hub for children, youth, and families to access comprehensive behavioural and clinical services in the heart of the region.

Brightside's integrated service model reduces the burden on families navigating complex systems by embedding multiple services in one collaborative environment. This transformation in care delivery strengthens not just individual outcomes, but the entire continuum of support available in our community.

Looking for support?

Visit brightsideabaservices.com to learn more about our programs and how we can help. Whether you're a caregiver, professional, or someone seeking services, Brightside is here to guide your journey with compassion, clarity, and care.

Well, that's a fact



109 children and families supported through urgent response.



Staff Shout Outs

Staff uplifting
each other!!



At Sunbeam, some of our greatest impacts come from what can't be easily measured – empathy, patience, teamwork, and a deep commitment to supporting one another.

Every day, staff across the organization step up in quiet but meaningful ways, including lending a hand to a colleague, bringing calm to a difficult moment, or simply offering a warm smile. These moments may be small, but their impact is lasting, strengthening our culture and the care we provide.

Well, that's a fact



1,142 days of children's overnight respite.

Throughout the year, team members took time to recognize each other through the Sunbeam Shout Out Initiative, which included brief notes of appreciation that reflect our shared values and highlight the people who bring them to life.

By recognizing and uplifting one another, we strengthen our connections and foster a culture grounded in care and compassion.

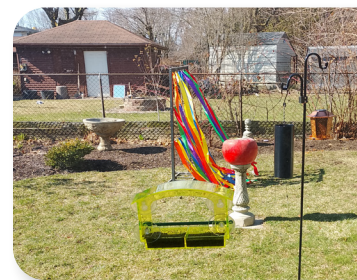
To every team member who leads with kindness, thank you. Your everyday actions are what make Sunbeam a supportive and inspiring place to work.

Sunbeam Boosters in Community Living Services

The Sunbeam Boosters is a passionate group of staff from across the Community Living Services (CLS) programs, each nominated by peers for their commitment to creating joyful, inclusive experiences for the people we support.

Formed to further energize and mobilize community spirit across CLS programs, the Boosters came together to share ideas and inspiration for meaningful opportunities to foster inclusion and belonging. They chose the name "Boosters" to reflect their role as motivators, sparking positivity and encouraging others to bring more joy into their homes and communities.

To support this mission, the Boosters created an "inspiration board" to share creative activities and uplifting moments. Recent posts like the Easter Garden and Sensory Backyard showcase the kind of initiatives that help plant seeds of growth, connection and celebration across CLS.





SUNBEAM STAFF ANNUAL LONG SERVICE AWARD RECIPIENTS

Many thanks to the dedicated staff at Sunbeam who put so much care and compassion into their work.

Well, that's a fact



Sunbeam has more
than **500 employees**.

35 Years of Service

Barbara Colquhoun
Tim Wilson

25 Years of Service

Katrina Pearson
Nicole Tailby
Michelle Vasconcelos

20 Years of Service

Charlene Jackson
Kimberley Kippenhuck
Amy Richardson

15 Years of Service

Hudda Caldwell
Sharon Da Silva

10 Years of Service

Sanda Bota	Larry Nickerson
Bryan Culham	Lauren Mathias
Ashley Harris	Shahnaz Roshani
Lindsay Hickey	Amela Suljovic

5 Years of Service

Sana Ali
Elshaday Baraki
Jaamee Bell
Denise Burke
Sabina Carnohan
Gabriel Chavez

Michelle Deveau
Jaime Eggleston
Barbara Gyimah
Christina Hall
Maria Henry-Spencer
Wendy Hughes

Jacqueline Lenover
Cecilia Lapinskas
Jill Mercier
Patricia Richards
Ashley Wilson
Caroline Vushe

Enriching Lives Through Connection and Joy

Sunbeam's Recreation & Wellness Program offers inclusive, engaging experiences that support the physical, emotional, and social well-being of individuals with developmental disabilities. Our team delivers a wide range of fun and accessible programming, including games, arts and crafts, sociable events, and music

A highlight this year was the "Tour the World" program, where participants travelled to a different country each month through themed crafts, dancing, cooking, baking, and more. Destinations like China, Mexico, and Ireland brought a world of discovery, flavour, and fun to life for our participants.

The program continues to provide meaningful opportunities for connection, creativity, and community in a safe and welcoming environment.

Ready to experience the excitement for yourself? Explore our offerings at:
<https://sunbeamcommunity.ca/recreation-and-wellness-events/>

Sign up through mycommunityhub.ca or email recreation@sunbeamcommunity.ca.



Honouring Your Impact

Sunbeam Community & Developmental Services makes such a positive difference in the lives of thousands of individuals and their families.

Because of the generosity of our many individual, corporate and other philanthropic donors, we continue to make vital programs and services available to the individuals we support and their families.

To our individual and family donors, Sunbeam wishes to thank each and every one of you for your ongoing and committed support. Together, we are building a stronger, more compassionate community, and we look forward to continuing this important work for many years to come.

To show your support, please visit: sunbeamcommunity.ca/donate

A special thank you to our corporate sponsors and community foundation donors:





What is the Sunbeam Seating and Mobility Clinic?

Our team of professionals collaborate to support individuals in maximizing and meeting their mobility goals and positioning needs. The team includes a Complex Care Coordinator, an Occupational Therapist, Service Providers, Technicians and Post-Secondary Kinesiology Students.

Who does the clinic support?

Children, adults and seniors with developmental disabilities, primarily living in Waterloo Region, although services are provided beyond our regional boundaries, as our clinic capacity allows.

Where We Started

At the Kingsway Campus in the 1980s, a Sunbeam Kinesiologist began a collaboration with the Government's Assistive Devices Program. The clinic initially operated out of our gymnasium space, once a week, with very limited equipment and resources.

Where We Are Now

Today, the clinic has been modernized to include a dedicated clinic space with state-of-the-art technology. There are numerous specialty equipment options, including specialized walkers, dynamic tilt wheelchairs, power wheelchairs, and more.

Services Offered

Assessments of functional mobility are offered through collaboration with the people we serve, their families/support staff, and service providers. This approach provides customized **mobility equipment solutions that promote:**

Independence

Respiratory Function

Skin Integrity

Occupational Participation

Accessibility

Comfort

Digestive Function

Spinal Alignment and Joint Function



The dedicated clinic team also provides modifications to custom-made seating moulds, development of transportation safety devices, assessment and referral for custom bracing solutions, equipment repairs, acquisition and customization of devices for activities of daily living (commodes, shower chairs) alternate seating options and devices related to safe mobility (transfer belts, protective helmets).

Other Seating and Mobility Services Provided

- ▶ Consultations and collaborations regarding positioning for various settings and activities
- ▶ Provision of positioning accessories
- ▶ Consultations for therapeutic surfaces
- ▶ Education and training for safe use and maintenance
- ▶ Staff ergonomic assessments
- ▶ Education and training on safe mechanics and techniques
- ▶ Assessments for recreational equipment

Success Story

One of the many success stories of the Seating and Mobility Clinic has been Lisa's long road to safe and comfortable power wheelchair driving.

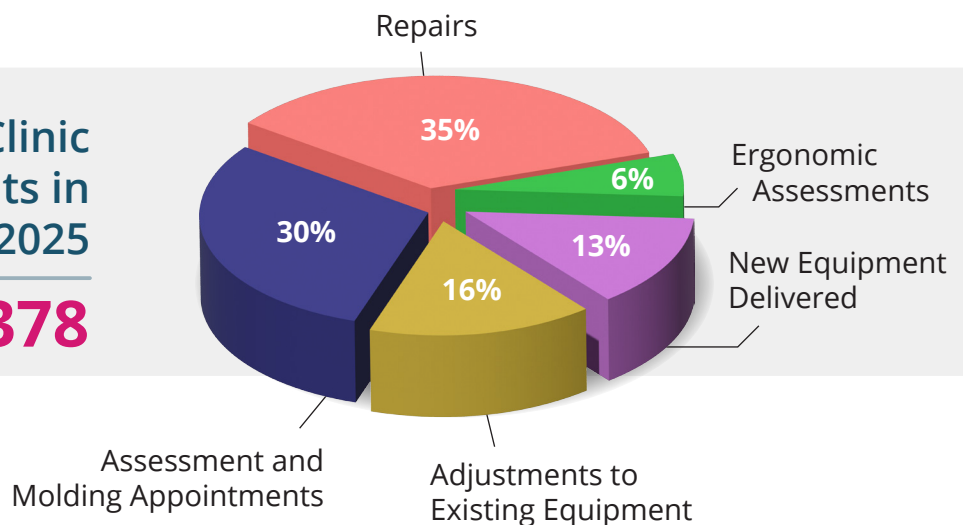
Her "driver training" began many years ago, culminating in receiving her "driver's licence" in the last few years. Her journey continues today through ongoing assessment of her positioning and regularly updating her custom-moulded seating to support her in the best possible position for driving.

The entire clinic team is so proud of Lisa's accomplishments!



Total Seating Clinic
Appointments in
2024-2025

378



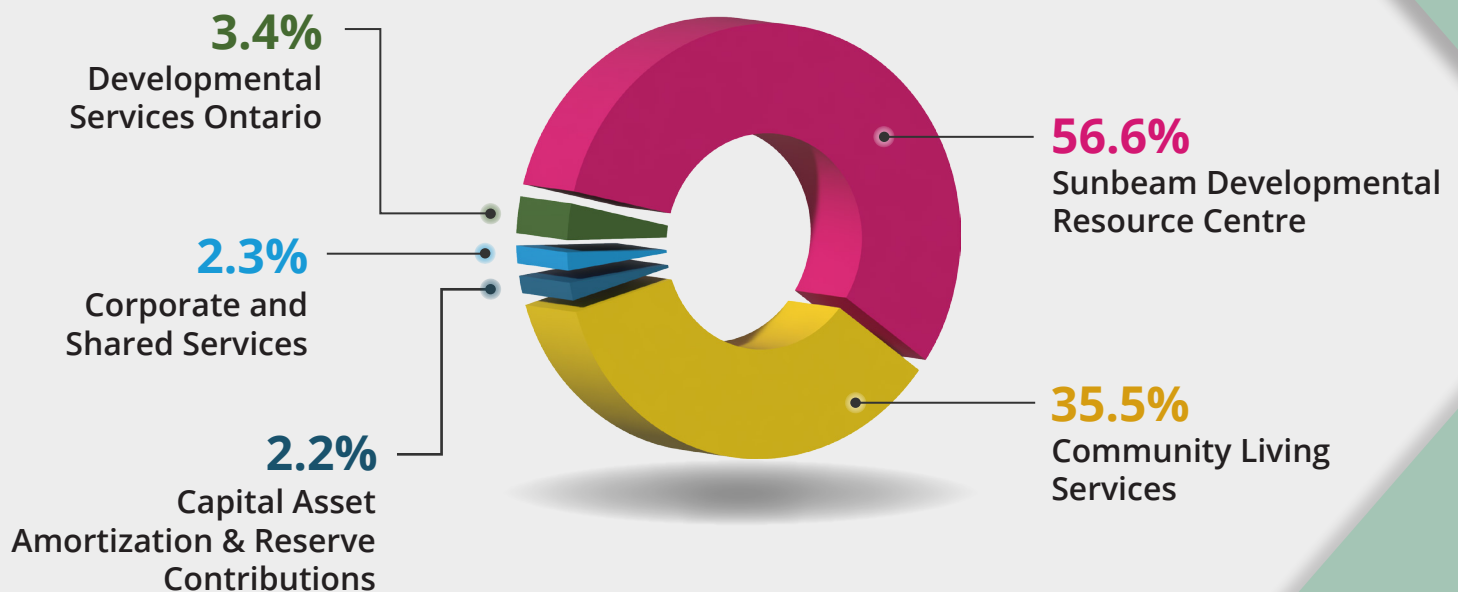
**Care
Comfort
Compassion**

Sleep System
Positioning

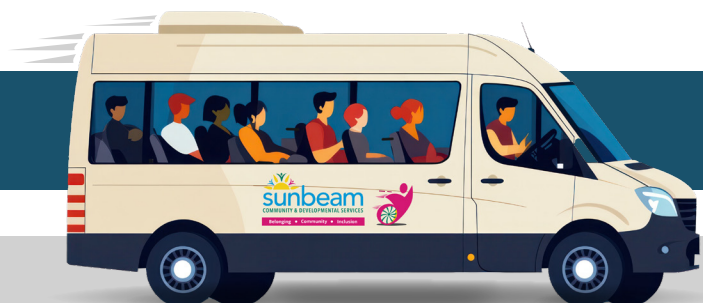
Financial Highlights for 2024 – 2025

Source of Funds	\$ Millions
Provincial Funding	83.484
Other Service Revenue and Donations	9.091
Federal Funding and Amortized Deferred Contributions	0.322
Total	\$92.897

Expenditures



Together We Drive Change



Navigating Support Together

Developmental Services Ontario (DSO) is the access point for adult ministry-funded services. In Central West Region, the DSO supports over 16,000 applicants and families yearly with a small, but mighty team of dedicated staff. The DSO's primary function is to deliver services that are governed by the Ministry of Children, Community & Social Services (MCCSS) to support applicants and families through their journey of living with a developmental disability as an adult.

Intake Coordination is often the first point of contact for applicants and families at the DSO, confirming eligibility, managing registries, facilitating referrals and more.

The Assessor team is our biggest team and most well-known for its work. This team travels far and wide across the entire Central West Region, meeting with applicants throughout two meetings (totalling up to 6 hours), getting to know them and identifying support they may need to be successful in daily living.

Our Service Navigators have a variety of different duties, from responding to general inquiries, DSO community engagement at resource fairs and events, sharing community information via our social media pages and frequent email distributions, transferring files between regions when individuals move, updating files, and so much more.

DSO Central West Region works closely with 31 Service Agency (SA) partners. When one of our partners has a ministry-funded spot available, they reach out to our Resource Management Coordinators,

who determine the best candidate for the available service based on their identified support needs.

The Housing Navigator meets with families and builds relationships with community partners around housing-specific needs, while our Scheduler expertly arranges and coordinates over 200 meetings a month between Assessors and applicants. Applicants, families and fellow team members also benefit greatly from the expert skills and knowledge of our Receptionist and Data Entry Clerks.

The DSO team works together like a well-oiled machine to provide the best possible support to the folks we serve!

We're also pleased to share a **"Year in Review"** for the DSO Central West Region – please visit: <https://www.dsocwr.ca/dso-central-west-region-year-in-review-2024-2025/>.



Well, that's a fact



10,782 DSO information responses provided.



DSO Central West Region Team

Meet Gurnek!

Gurnek is often described as fun, energetic, and a true social butterfly. Polite, kind, and soft-spoken, he loves to share his passions and interests with those around him. Since moving into a Sunbeam inclusive living home in June 2024, Gurnek has been thriving and making the most of every day.

A curious and enthusiastic learner, Gurnek especially enjoys being read to and is always eager to discover new things. His dreams for the future are as exciting as his imagination, as he hopes to become a scientist, an engineer, or work with dinosaurs- one of his greatest fascinations.

Gurnek also has an adventurous spirit. His dream bucket list includes visiting outer space, exploring the ocean depths, swimming with sharks, seeing the Olympics live, and experiencing a real-life "Night at the Museum." And if he could have any pet? A dinosaur, of course!

If given the chance, Gurnek would love to meet a professional hockey player like Sidney Crosby, ask his neurologist every science question he can think of, meet J.K. Rowling, hang out with Harry Potter, chat with an Egyptian mummy, or even travel back in time to see dinosaurs in the flesh.

A fun fact about Gurnek: he can name all the planets in our solar system! He enjoys sporting events, dining out, visiting museums and zoos, watching movies, spending time in nature, and relaxing with his favourite shows on his iPad or TV. School is another highlight, full of exciting activities and opportunities to learn and grow.

Gurnek's vibrant imagination, kindness, and zest for life brighten every space he's in.

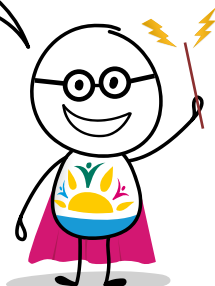
We're so glad he's part of the Sunbeam Community!

"Seeing happiness and growth from our persons served makes everything worthwhile. It's why we're all here."

Sunbeam Staff

Iter Fortuna,
Gurnek!

Spell Translation:
Journey of Success,
Gurnek!



Meet Mary!



Mary's story is one of resilience, connection, and the power of community in shaping a meaningful life.

At just 18-years-old, Mary joined Sunbeam's Host Family Home Program through the Transitional-Aged Youth (TAY) Coordination Program. This vital initiative supports young adults as they transition out of provincial child protection services, helping them navigate independence with the stability and care they deserve. For several years, Mary thrived in a nurturing home environment where she built strong relationships, discovered her strengths, and developed a clear sense of belonging.

In 2023, when her host family moved away, Mary faced a major life change. It meant saying goodbye to a familiar home and the daily rhythms she had come to rely on. Still, Mary approached the transition with courage and determination. By early 2024, she moved into a new family home where she was warmly welcomed and supported. Since then, Mary has embraced the change with optimism, quickly finding her place and continuing to grow both personally and within her community.

Now 28, Mary is thriving in every sense of the word. Twice a week, she proudly takes on the role of "Miss Mary" as an assistant educator at a local preschool, where she supports young learners and brings joy to the classroom. She also dedicates time each week to volunteering at a community health hub, helping prepare and pack meal kits for neighbours in need, an act of kindness that reflects her generous spirit. In her free time, Mary enjoys collecting eggs at home, skating, playing ball hockey, and staying active with those around her. She finds joy in everyday moments and continues to explore new opportunities for growth and connection.



Mary is more than a success story; she is a vibrant, engaged, and valued member of her community. Her journey is a powerful reminder that with the right support, compassion, and sense of belonging, individuals can overcome challenges and build lives full of purpose and pride.

Mary is proud of who she's become, and so are we!

Our Community in Focus

Meet Linda!



Linda's journey at Sunbeam is centred around music, connection and living by the philosophy that appreciating the little things contributes to a good life.

Since joining the Sunbeam team in 2017, Linda has been living with her two housemates for seven years now. A regular attendee of the day program, Linda has found enjoyment in connection.

While she enjoys all of the activities, some of Linda's favourite events in the day program are the musical performances by Ryan Major, Emily, and Julia.

"Music brings me joy," Linda shares. Surrounding herself with music, Linda takes part in Buddy Choir once a week, where she has made some incredible friends. One of Linda's biggest aspirations is to let her singing voice be heard by the masses at one of the Buddy Choir musicals.

Staying on the theme of music, one of Linda's most cherished memories is attending a Zachary Stevenson concert where she rocked out to Buddy Holly cover songs.

Whether it is long walks when the weather is nice, going to the beach, playing with beads or chatting with Sunbeam staff, Linda surrounds herself with happy experiences.

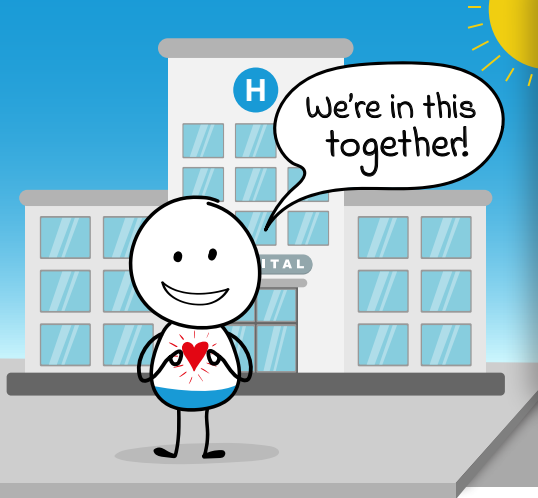


Who doesn't love marshmallows?!



Last year, Linda took a vacation with Sunbeam staff along with a roommate to a cottage where she had a blast around the campfire roasting marshmallows.

Throughout the year, you can find Linda simply being Linda. From everyday activities to singing or listening to music, there is never a dull moment in Linda's life, and that's something she wouldn't trade for the world!



Comfort, Continuity, and Support When it's Needed Most: Hospital Care Program

When individuals supported by Sunbeam require hospital care, they often need more than just medical attention. A hospital visit also involves navigating an unfamiliar and overwhelming environment. For many, especially those who do not use words to communicate, hospital visits can be confusing and distressing. That's where Sunbeam's Hospital Care Program makes all the difference.

Operated through a combination of fee-for-service and donor funds, this unique and vital program ensures that individuals never have to face a hospital visit alone. Our trained staff accompany the people we support during their hospital visits, offering familiar faces, emotional reassurance, and the critical ability to bridge communication between the individuals, their family, and medical professionals. This continuity of care helps reduce anxiety, prevent misunderstandings, and promote a better overall healthcare experience.

Whether it's helping interpret non-verbal cues, advocating for specific needs, or simply providing a calm and reassuring presence in an unfamiliar setting, Sunbeam's Hospital Care Program exemplifies our commitment to person-centred support, every step of the way.

Your support helps us continue to stand beside those who need us most, when they need us most.

Help Make a Difference Today

Visit our donation page at: <https://sunbeamcommunity.ca/donate>



Well, that's a fact



1,812 Hospital Care donor-supported hours.

Dedicated to Making a Difference

We took the time to celebrate the incredible people who make our mission possible every single day – our employees! From the teams at Sunbeam Developmental Resource Centre, Community Living Services, Developmental Services Ontario and Administration and Support Services, it's our staff who are the heart of Sunbeam.

Meet Tarique



"I'm excited (and a little surprised) to be in the spotlight," Tarique shares with a smile. In just two years, he's grown both personally and professionally, but what's stayed constant is his connection to the people we serve.

One of his most memorable moments so far was a birthday celebration filled with laughter, music, cake, and joy. "It reminded me why I love this work, it's the little things that mean the most."

Outside of work, staying active is a big part of Tarique's life. Whether he's at the gym, playing basketball with friends, or enjoying a quiet round of golf, he finds balance in movement. And when it's time to unwind, you'll find him quoting lines from his favourite retro movies, something he does so naturally, he doesn't even notice!

Competitive but kind, focused yet easygoing — Tarique brings a steady, dependable energy to every space he's in. His coworkers describe him as approachable, calm under pressure, and someone you can count on to listen. (And yes, he does bring the heat during friendly fitness challenges!)

Tarique, thank you for everything you bring to Sunbeam. Your dedication, empathy, and genuine care for others inspire us all. Here's to everything ahead — and that future hole-in-one!

Ashley began her journey with Sunbeam in 2016 as a summer student and quickly found her passion in supporting individuals with complex needs.

"The planning that goes into activities is always worth it when you see the positive impact these programs have on the people we support."

Over the years, Ashley has witnessed incredible growth among the individuals she supports. What once seemed like small steps have become major milestones, thanks to the shared efforts of a tight-knit, hardworking team and the resilience of the individuals themselves.

From thoughtfully planned programming to spontaneous moments of connection, Ashley brings passion and purpose into her work. The relationships she's built with both clients and colleagues have shaped a work environment that's as supportive as it is joyful.

Ashley, your dedication, empathy, and drive to make a difference inspire everyone around you. Thank you for being such an important part of the Sunbeam family!

Meet Ashley



Everything's Better When We're Together!

Meet Sharon



Since joining Sunbeam in 2021, Sharon has been a valued member of the Kids Hub Team. With 16 years of experience as a Personal Support Worker, she transitioned to Sunbeam Kids Hub to help create a warm and caring home for the children we support.

"I believe that the children we support are individuals with different abilities, but they should all have the same opportunities to grow, learn, and feel like they are part of a loving family."

Outside the walls of Sunbeam, Sharon's heart is full of family. She cherishes time spent with her large family, enjoys quiet moments with a good non-fiction book, and loves cross-stitching her latest project. When she needs fresh air and adventure, you'll find her hiking at the cottage or even cruising on an ATV.

Her journey with Sunbeam has introduced her to many incredible people. Reflecting on her time here, Sharon shared, "I saw so many kind and caring people that genuinely have good hearts, providing the best care and assisting the people we support to live their best lives. This is very inspiring to me."

Sharon's dedication and compassion make her an essential part of the Kids Hub family, and we're so grateful for all she brings to Sunbeam.

Meet Abeer



Abeer has been the warm and welcoming voice at Sunbeam's DSO office in Halton since October 2022. As our Receptionist and Scheduler for the DSO-Central West Region, she's often the very first person clients and families connect with. Whether over the phone or in person, she takes great pride in making each interaction kind, efficient, and positive.

Abeer says, "It really makes me feel like I'm making a positive impact when clients tell me how grateful they are to speak with a live person instead of an automated system."

One moment that stands out in her time here was helping a client in crisis book an urgent assessment. The client was overwhelmed and emotional, but Abeer's quick and empathetic response secured the appointment that brought immediate relief. A heartfelt thank-you call afterward was a powerful reminder of just how meaningful these connections can be.

Outside of work, Abeer loves to unwind watching sunsets at the beach, a peaceful way to reset and recharge after a busy day.

Thank you, Abeer, for your compassion, calm presence, and dedication to helping every person who reaches out to Sunbeam's DSO feel heard and supported.

A Storybook Celebration

Kids Day 2024

Once upon a time, on August 24, 2024, Sunbeam's Kingsway Campus transformed into a storybook wonderland for our 3rd Annual Kids' Day! With costumes, characters, and candy galore, it was a day where imagination took centre stage and smiles were everywhere you looked. This annual tradition continues to grow in spirit and participation, bringing our community together for a day of fun, inclusion, and shared joy.



This year's storybook-themed celebration transported guests into a world of magic and adventure. Beloved characters like Peter Pan, Tinker Bell, Harry Potter, and Ariel enchanted the crowd with special appearances, sparking wide eyed wonder. The event welcomed over 60 children and their families, who enjoyed a wide variety of games, exciting prizes, and whimsical treats, including a crowd favourite – cotton candy!

From arts and crafts to interactive games and themed photo ops, every detail of the day was thoughtfully planned to create an inclusive, family-friendly atmosphere.



Kids' Day is one of the many ways Sunbeam fosters meaningful, inclusive experiences for the people we serve. A heartfelt thank you goes out to our dedicated staff and volunteers, generous community sponsors, and everyone who helped bring the special day to life.





OUT AND ABOUT WITH SUNBEAM



Karaoke Night

Our Karaoke Night at the Edelweiss Tavern brings together individuals of all abilities for an evening of laughter, connection and good cheer. Our welcoming atmosphere encourages everyone to socialize, enjoy music and feel part of a vibrant community. The management at the Edelweiss Tavern is fantastic; they make us feel welcome and are so helpful in supporting this event! Thank you to everyone who attended the events. We look forward to many more!



Summer BBQ Fun

Connecting with friends, making new friends, enjoying the fresh air, good music and yummy food! Our monthly summer BBQs are a popular event! Such a great feeling to relax, dance, listen to music in the sunshine and eat!

Well, that's a fact



179 Recreation & Wellness Events were attended in 2024-2025.

The Sunbeam Community Outreach Program hosted a Las Vegas-themed event with many fun games, including plinko, cards, bowling, car racing and a life-sized Connect Four game. The group then enjoyed a special pizza lunch.



Vegas Event

Celebrating Chinese New Year

The Recreation & Wellness and Community Outreach teams arranged for a special Chinese New Year celebration. The event also included Chinese food, and all the participants received a red envelope with a gold coin for good luck.



5-Year Reflections From Our CEO



In January 2020 I joined Sunbeam as its new Chief Executive Officer, and I'm thrilled to share a few reflections about my meaningful journey with this one-of-a-kind organization so far. Having studied, lived, worked and volunteered in Waterloo Region for almost 30 years, I thought I knew Sunbeam and the local not-for-profit landscape fairly well. I had worked in the vulnerable sector for many years, and I'd served as a volunteer family-home provider for an adult with intellectual and physical disabilities for several years, which taught me how much I still had to learn.

Since being welcomed into the Sunbeam Community I have gained such appreciation and respect for the people who choose to dedicate their careers to serving and supporting persons living with developmental disabilities. The work can be rewarding yet challenging, satisfying yet everlasting, joyous yet intensely emotional. Working at Sunbeam is a calling, to be certain, and there is no shortage of awesome talent within our growing workforce of 500+ strong. As an organization, Sunbeam is inclusive and welcoming of all, celebrating differences and fostering community every single day.

The individuals we support face many barriers and obstacles every day, yet I regularly see our clients expressing happiness and contentment, experiencing belonging and community, showing determination, optimism and kindness for themselves and others always with a sense of hope. It is our clients who inspire us to strive to do better every day, to support them to reach their goals, as we are guided by the philosophy **"Nothing about us without us."** Powerful words, with a depth that resonates throughout our work. **"Nothing about us without us"** keeps us on this journey together, sometimes following the lead of our clients and sometimes side-by-side, while always extending a helping hand when needed.

I had so much to learn when I walked through the door on January 6th, 2020, which was a far more eventful year than anyone expected, and five years later I'm still learning every day.



Artwork From Our Persons Served





We greatly appreciate the many partnerships we have across developmental services, community and social services, education, government, and with our donors and supporters in the community because we all share in this journey. To those of you that are a part of Sunbeam's Community, I am professionally and personally grateful for your partnership and collaboration. Thank You - your efforts and support make all the difference.

I only see positive things ahead for the Sunbeam Community, and you are invited you to stay connected with us along the way!

Brian Swainson
Chief Executive Officer



Sunbeam Affiliations

Sunbeam is an engaged community leader promoting inclusion and belonging for the people we serve.

To discover different ways to lend your support to Sunbeam and our areas of greatest need, please visit our website at:

www.sunbeamcommunity.ca/donate

2749 Kingsway Drive
Kitchener, Ontario
N2C 1A7

Phone: (519) 893-6200
Fax: (519) 893-9034



sunbeamcommunity.ca

Visit our websites to connect with our Community!



We also got the Social Medias!!



sdrcc.ca



brightsideabaservices.com



dsocwr.ca

Sunbeam Community & Developmental Services is a registered charity, registration number: 108050899 RR 0001

